

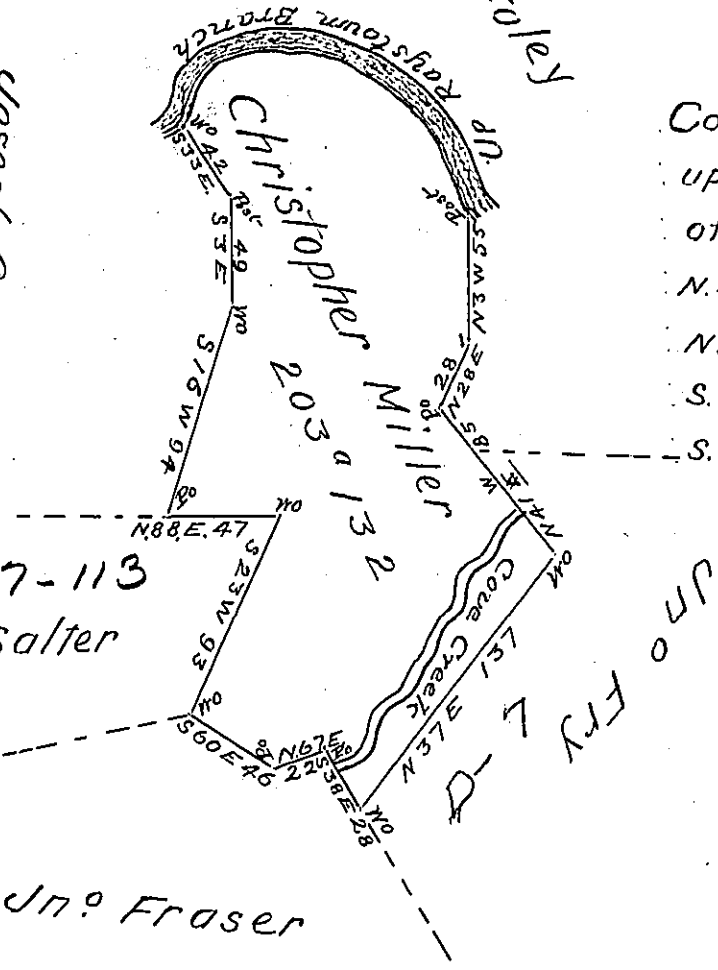
James Foley  
1945

C 114-291

Joseph Grenawalt

N-17-113  
Jn<sup>o</sup> Salter

Jn<sup>o</sup> Fraser



Courses & distance  
up Raystown Branch  
of Juniatta  
N. 20. W. 48  
N. 52. W. 48  
S. 88. W. 57  
S. 23. W. 34

Situate on Cove Creek and the Raystown Branch of Juniatta-at the mouth of Friend's Cove in Colerain Township, Bedford County Containing Two Hundred and three acres and one Hundred and Thirty two perches and allowance of six per Cent- Surveyed the 24<sup>th</sup> day of May 1768 for Christopher Miller on order N<sup>o</sup> 2715 dated the 6<sup>th</sup> day of February 1767

James O'Connor D.S.

To ~~Jacob Spangler~~ Esqr. S.G.  
Gabriel Hiester

IN TESTIMONY that the above is a copy of the original remaining on file in the Department of Internal Affairs of Pennsylvania, made conformably to an Act of Assembly approved the 16th day of February, 1833, I have hereunto set my Hand and caused the Seal of said Department to be affixed at Harrisburg, this Twenty ninth day of February 1904.

*Isaac P. Runyan*  
Secretary of Internal Affairs.